



# HT510 3.5" CE handheld terminal

Designed to afford performance and versatility at the most competitive price yet.

The HT510 is a rugged handheld computer, ideally suited for retail, depot environments, logistics and warehouse applications. The HT510 performs with versatility and functionality, while maintaining industrial ruggedness at a great price.

## The HT510 offers incredible value.

The USB-cradle (which includes battery charging slot)  
USB-cable and power supply come as standard!

### Fast and versatile

Equipped with a fast 1GHz processor and Microsoft Windows CE 6.0 professional operating system, makes this device not only fast but also compatible with a variety of current software applications. The HT510 provides multiple wireless communications such as the integrated WLAN 802.11 b/g/n for real-time data collection and Bluetooth® 2.1 for cordless connectivity and additional microSD expansion, to provide great user satisfaction.

When it comes to data collection, the HT510 is loaded with advanced data capture capabilities. It is available with a 1D laser or 2D imager. With these extensive choices, you can find the right model for your application.

### Rugged

The HT510 is protected from various environmental factors. From moisture to direct spills, the HT510 can endure exposure to water. This device is also sealed against dust and continues to perform reliably after multiple 1.5 drops to concrete. The ruggedness of the HT510 handheld computer translates to less repairs and downtime in the field, ensuring an uninterrupted workflow for your business.

### Practical

The HT510 is designed with your work day in mind. Carefully designed ergonomics makes the HT510 comfortable to hold, ensuring it is perfectly suited for inputting data and multiple scanning operations.

It's developed from the ground up, to serve as your data collection terminal with crucial features such as, 32 large keys, (including direction buttons, 4 function keys), multiple scan buttons and a swappable large 4500mAH battery (with integrated cover). The HT510 handheld computer has a large 3.5" QVGA resolution resistive touch-screen, ensuring you have all the screen real estate you need for your applications and maximizing ease-of-use.

Additionally, essential accessories such as gun grip, 4-slot battery charging unit, 4500mAH battery and Unitech software support makes operation simple with this handheld terminal.

### Main Features

- All-in-one box; HT510 comes with USB-cradle (cradle includes battery charging slot) and power supply.
- Available with 1D laser or 2D imager
- Convenient one piece battery design with integrated cover
- Microsoft Windows CE 6.0 and industrial grade 1.0GHz processor
- Large 32 Keys (numbers/alphanumeric), directional buttons, multiple scan buttons and programmable keys.
- Rechargeable and swappable 4500mAh battery.
- 3.5" large resistive touch screen
- IP64 rated and 1.5m drop specification.
- Optional additional UnitCare 2.0 coverage available.



**unitech**  
because we care



# V1 HT510 Specifications

## Operation System

CPU	32-bits; 1.0 GHz
Memory	RAM : 512 MB ROM : 4 GB
OS	Microsoft Windows CE 6.0

## Display

3.5" color QVGA (320 x 240) resistive touch screen & backlight

## Buttons / Keypad

32 keys including function keys.  
Large numeric and arrow keys.  
Side scan button (Left / Right) / Keypad scan button

## Indicator

LEDs, Vibrator, Speaker

## Symbologies

**1D laser version** Code 39; Codabar; Code 128; Discrete 2 of 5; IATA 2 of 5; Interleaved 2 of 5; Code 93; UPC A; UPC E0; EAN 8; EAN 13; MSI; EAN 128; UPC E1; Trioptic Code 39; Bookland EAN; Coupon Code; RSS-Limited; RSS-14; RSS-Expanded

## 2D imager version

### 1D codes:

UPC/EAN, Bookland EAN, UCC Coupon Code, ESSN EAN, CODE 39, CODE 128, GS1-128, ISBT 128, Trioptic Code 39, CODABAR, MSI, Interleaved 2/5, Discrete 2/5, Chinese 2/5, Korean 3/5, Matrix 2/5, CODE 32, CODE 93, CODE 11, Inverse 1D, GS1 DataBar, Composite Codes.

### 2D codes

PDF417, MicroPDF417, Data Matrix, Data Matrix Inverse, MaxiCode, QR Code, Aztec, Aztec Inverse. Postal Codes: U.S. Postnet, U.S. Planet, U.K. Postal, Japan Postal, Australian Postal, Netherlands KIX Code, USPS 4CB/One Code/Intelligent Mail, UPU FICS Postal

## Power Source

Main battery	Removable and rechargeable Lithium-ION battery pack 3.8V@4500 mAh
Backup battery	Can backup data up to 72 hrs
Working time	Operating time: 10 hrs (depending on application) Charging time: 4 hrs to fully charge

## Communication

USB	USB 2.0
WLAN	802.11 b/g/n, Summit Drive, CCXv4
Bluetooth	Bluetooth 2.1 + EDR

## Unitech Europe

Tilburg, The Netherlands  
• Tel.: +31 (0)13 460 9292  
• Email: [Info@eu.ute.com](mailto:Info@eu.ute.com)  
• Website: <http://eu.ute.com>

Unitech America

Unitech Asia Pacific

Unitech China

Unitech Europe

Unitech Japan

Unitech Taiwan

Specifications subject to change without notice. Copyright 2011 Unitech Electronics Co., Ltd. All rights reserved. Unitech is a registered trademark of Unitech Electronics Co., Ltd. All product and company names are trademarks, service marks, or registered trademarks of their respective owners.

## Audio

Microphone, speaker and 3.5mm audio jack

## Enclosure

Weight	385g (with battery pack)
Dimension	192mm x 73.8mm x 30mm

## Expansion Slot

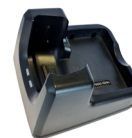
Micro SD (Support up to 32GB)

## Environmental

Operating temperature	-10°C to 50°C
Storage temperature	-20°C to 70°C
Relative Humidity	5% ~ 95% (non-condensing)
Drop Specification	1.5 meter (drop test to concrete)
Environmental Sealing	IP64

## Accessories

Single slot USB cradle  
Gun-grip  
Power adapter  
Micro USB (for data)  
3.8V@4500 mAh Lithium-ION battery pack (with integrated cover)  
4-Slot battery charging unit



### HT510 1-Slot USB Cradle

1-slot USB cradle with spare battery charging compartment.

Note: Second battery not included.

## Supported:

Unitech 12Manage and 12Solutions



## Warranty

1 Year Terminal and Cradle / 3 months battery.  
Optional additional UnitCare 2.0 coverage available.



### Unitech's service program

UnitCare 2.0 offers customers a high level of security by a reliable, high-quality and effective program for getting your devices serviced quickly. It also drives the hidden costs out of your installations. UnitCare goes beyond the standard warranty with a complete service offer for different need. **More information: [unitcare.unitech.eu](http://unitcare.unitech.eu).**

**unitech**  
because we care